

DOOR CONFIGURATION					WEIGHT (LBS)	
MODEL	DESIGN	TOP	GLAZING	INSUL		FINISH
524			DSB		WHITE	151

SPECIAL NOTE: THE DESIGN OF THE SUPPORTING STRUCTURAL ELEMENTS SHALL BE THE RESPONSIBILITY OF THE PROFESSIONAL OF RECORD FOR THE BUILDING OR STRUCTURE IN ACCORDANCE WITH CURRENT BUILDING CODES.

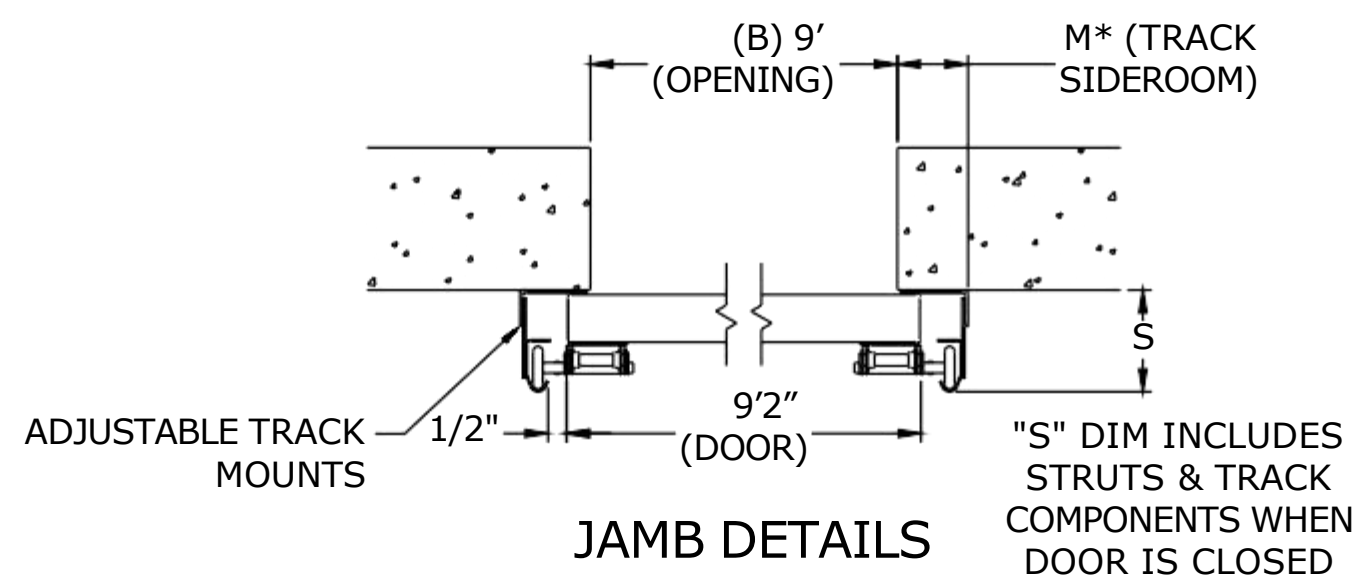
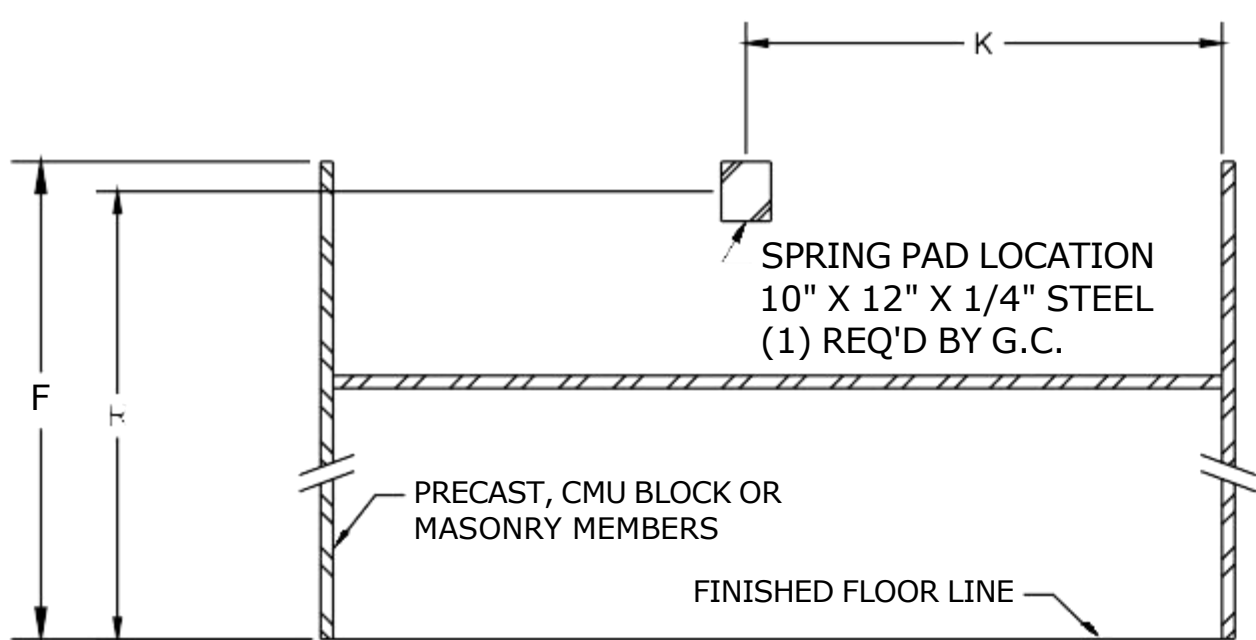
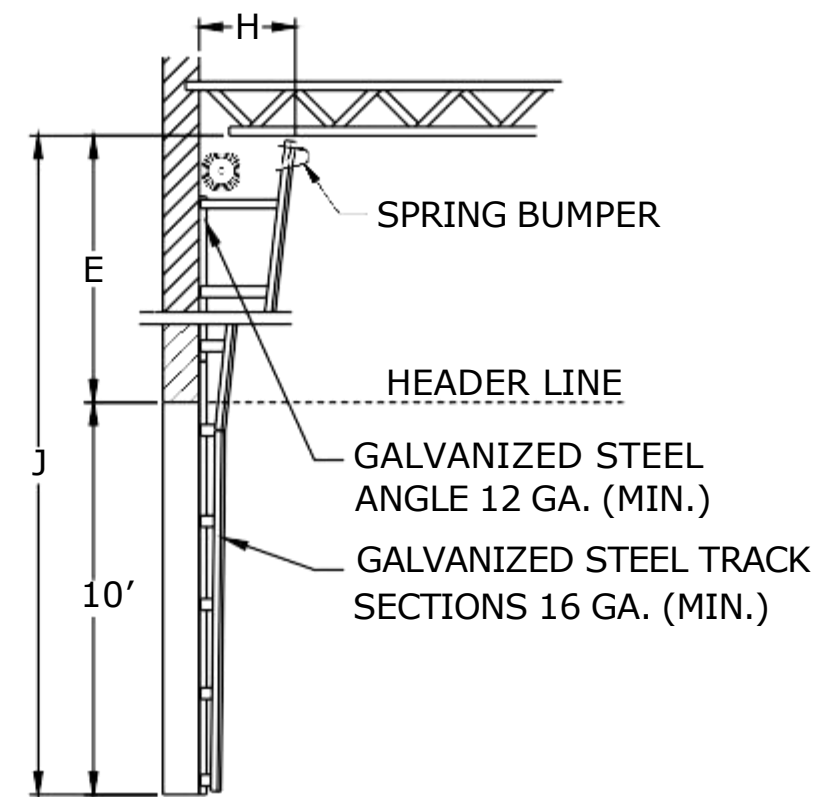
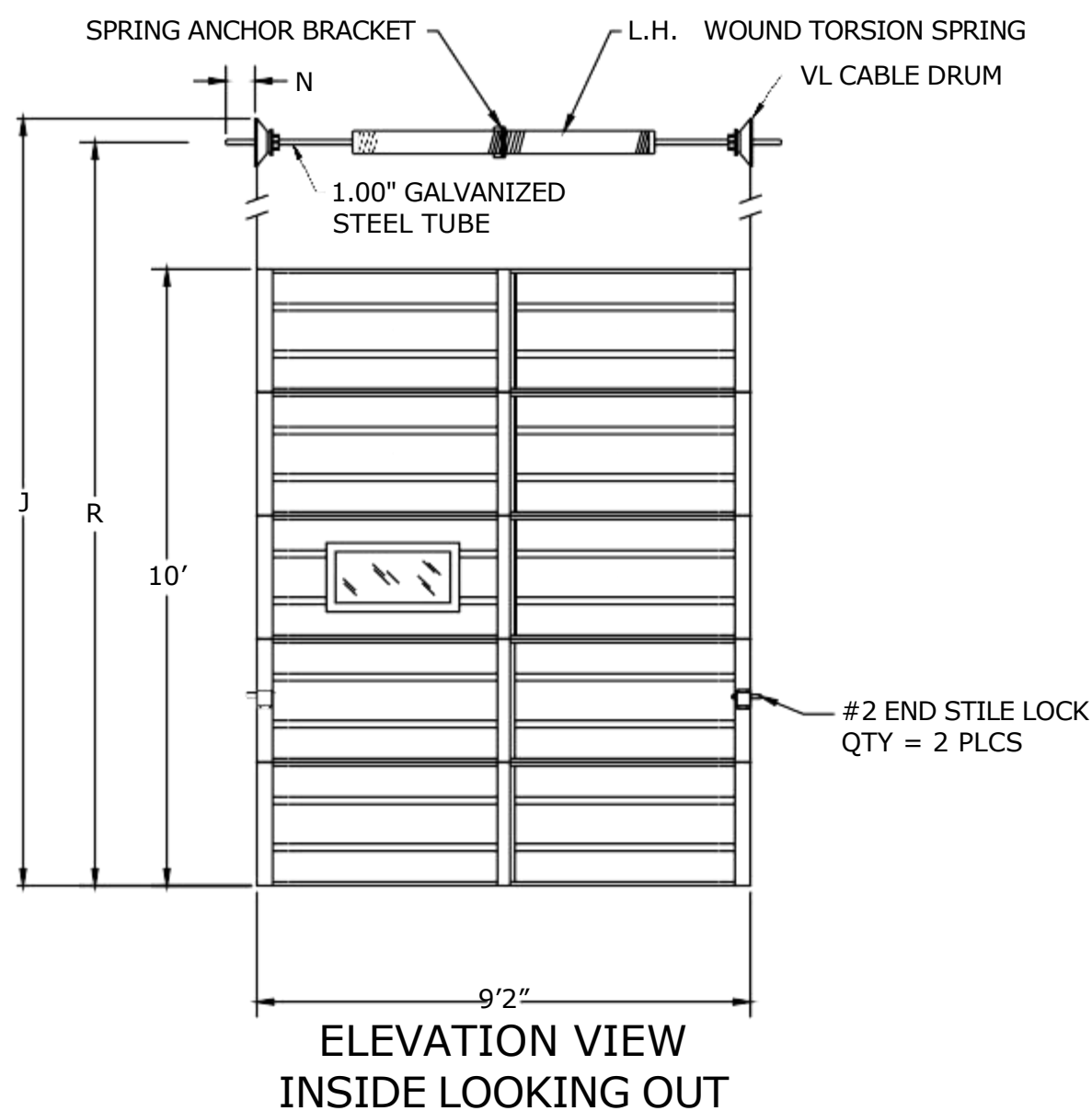
# MODEL 524

SECTIONS ARE 2" NON-INSULATED 24GA. ROLL FORMED RIBBED STEEL CONSTRUCTION.

ACTUAL DOOR HEIGHT IS APPROX. 1" OVER BECAUSE OF JOINTS BETWEEN SECTIONS PLUS BOTTOM ASTRAGAL.

## NOTES:

- (ONE) DOOR 9'-2" x 10'-0"
- DOOR TO BE SUPPLIED WITH 10,000 CYCLE TORSION SPRINGS.
- DOOR TO BE SUPPLIED WITH REVERSE ANGLE MOUNTED, 2" GALVANIZED STEEL TRACK WITH FULL VERTICAL LIFT.
- DOOR TO HAVE ONE 24 X 12 LITE (PER SECTION) OF DOUBLE STRENGTH GLASS LOCATED IN SECTION 3 AS SHOWN.
- DOOR TO HAVE TWO INTERIOR MOUNTED #2 END STILE SLIDE BOLT DOOR LOCKS.



DIM.	DESCRIPTION	DIMENSIONS
A	DOOR WIDTH	9'-2"
B	OPENING WIDTH	9'-0"
C	DOOR HEIGHT	10'-0"
D	OPENING HEIGHT	10'-0"
	QUANTITY OF PANELS WIDE	2
	QUANTITY OF SECTIONS HIGH	5
E	HEADROOM (MIN.)	11'-0"
F	JAMB HEIGHT (MIN.)	21'-0"
G	OVERHEAD CLEARANCE	
H	BACKROOM (MIN.)	1'-5"
J	FLOOR TO CEILING (MIN.)	21'-0"
K	SPRING PAD OFFSET 1	4'-0"
L	SPRING PAD OFFSET 2	
M	TRACK SIDEROOM	0'-3"
N	COUNTERBALANCE SIDEROOM	0'-5"
R	SHAFT CENTER LINE	20'-6"
S	TRACK BACKROOM (AT FLOOR)	0'-4.5"

2-12-24

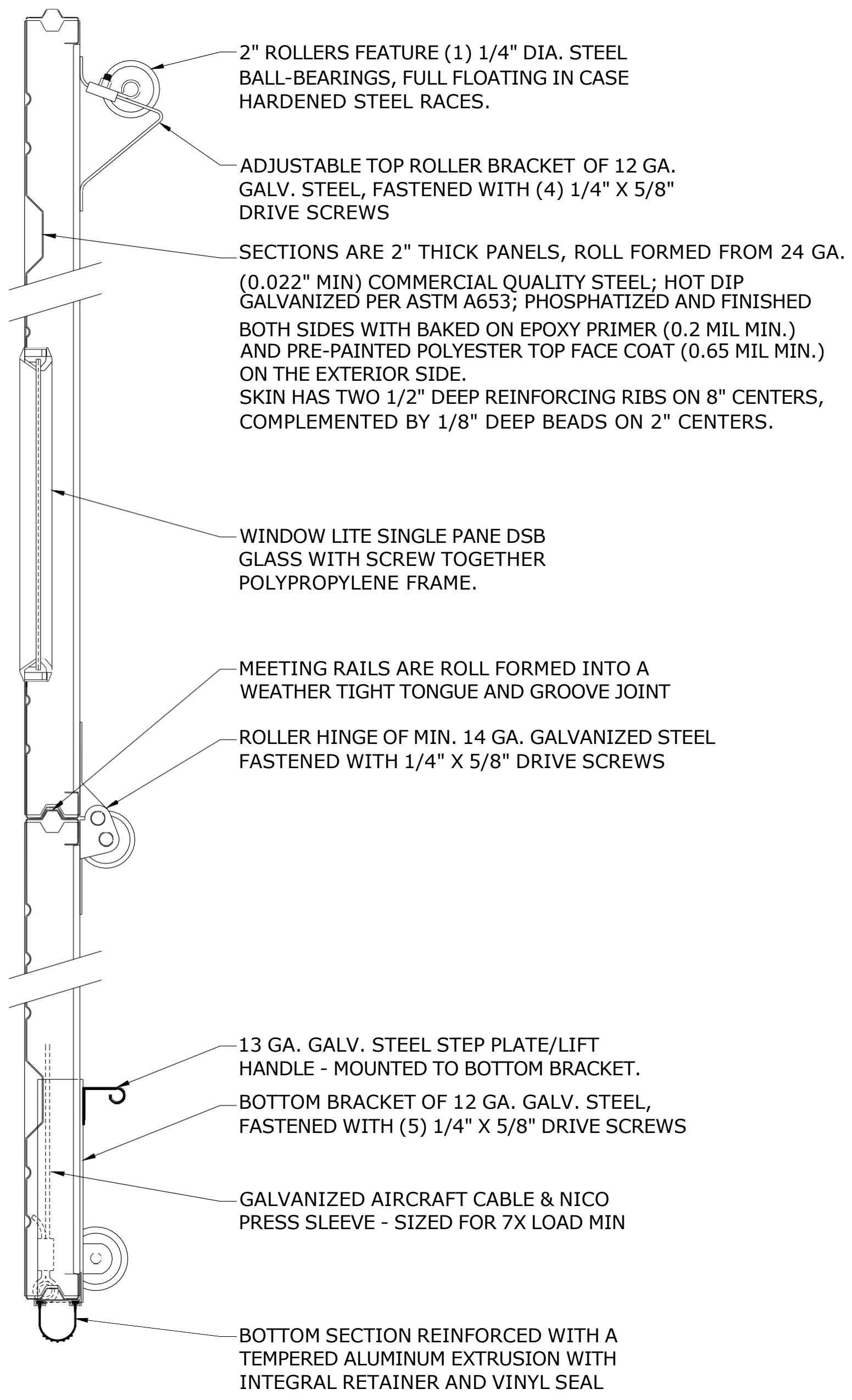
**Clopay**  
CORPORATION

SHOP DRAWING  
NOT TO EXACT SCALE

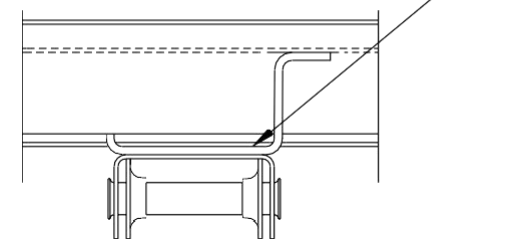
**IMPORTANT:** This document must be signed and returned prior to any fabrication. Please reference this drawing number on all correspondence. Thank you!

**NOTICE:** Confidential/Proprietary information of CLOPAY CORPORATION is contained herein and may not be disclosed, used, duplicated, made available, or distributed without its prior consent. Failure to observe this notice may result in liability for any damages and losses resulting therefrom.

ESTIMATE:	DOOR TAG:	APPROVAL SIGNATURE:	APPROVAL DATE:
DRAWN BY: ASD	DATE: 04-22-24		
CUSTOMER: N & H ACCESOS INDUSTRIALES		DRAWING NUMBER:	SHEET: 1 OF 2
JOB:			
CSR/DC:			

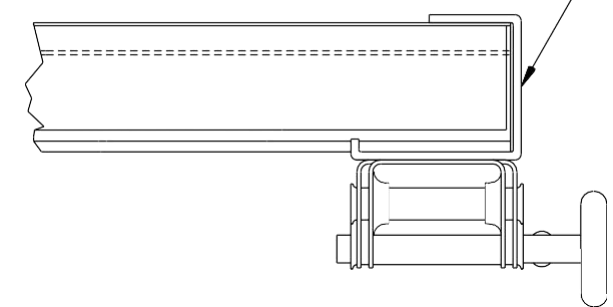


CENTER STILE OF 14 GA. GALV. STEEL FASTENED TO EXTERIOR SKIN WITH TOG-L-LOC JOINING SYSTEM



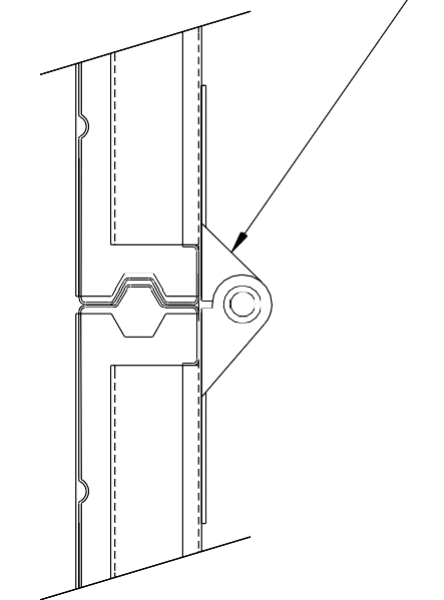
INTERMEDIATE HINGE DETAIL

END STILE OF 18 GA. HOT DIPPED GALVANIZED G-40 STEEL WITH NO OIL COATING, FASTENED TO EXTERIOR SKIN WITH TOG-L-LOC JOINING SYSTEM



SINGLE END HINGE DETAIL

CENTER HINGE OF 14 GA. GALV. STEEL, FASTENED WITH (4) 1/4" X 5/8" DRIVE SCREWS



SECTION JOINT DETAIL

IMPORTANT: PLEASE REFERENCE THE DRAWING NUMBER ON ALL CORRESPONDENCE



**IMPORTANT:** This document must be signed and returned prior to any fabrication. Please reference this drawing number on all correspondence. Thank you!

**NOTICE:** Confidential/Proprietary information of CLOPAY CORPORATION is contained herein and may not be disclosed, used, duplicated, made available, or distributed without its prior consent. Failure to observe this notice may result in liability for any damages and losses resulting therefrom.

DRAWN BY: ASD	DATE: 04-22-24
CUSTOMER: N&H ACCESOS INDUSTRIALES	
JOB: 524	
CSR/DC:	

APPROVAL SIGNATURE:	APPROVAL DATE:
DRAWING NUMBER:	SHEET: 2 OF 2

SHOP DRAWING  
NOT TO EXACT SCALE